

Precast Plank Slab

PRE-STRESSED STEEL

FAST & EASY TO INSTALL

COST-EFFECTIVE

Our **PRECAST PLANK SLAB** is a precast floor/panel solution which allows contractors and developers to:

- **Reduce** overall **material and labor cost by 10% - 15%.**
- **Build 1.5x faster** than traditional cast-in-place
- **Minimize** quantity of **formwork and shoring**
- **Lessen** jobsite congestion

Uses:

- **Floor Slab:** for commercial and housing developments w/ cast-in-place topping slab
- **Water/Septic Tank Cover:** to avoid complex formwork for water tanks & box culverts
- **Utility Vault Cover:** to cover the top of electrical and water utility vaults
- **Bedding Slab:** for culverts & other underground structures
- **Retaining Wall:** for inserting slab between concrete or steel I-columns
- **Steel Decking:** steel decking replacement to increase fire resistance



Ideal for:

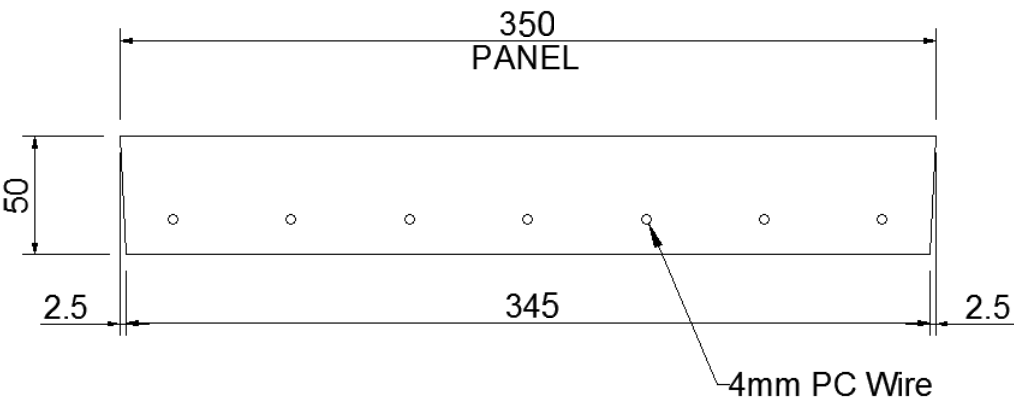
- Commercial & Residential Developments
- Industrial Developments
- Infrastructures

SPECIFICATIONS

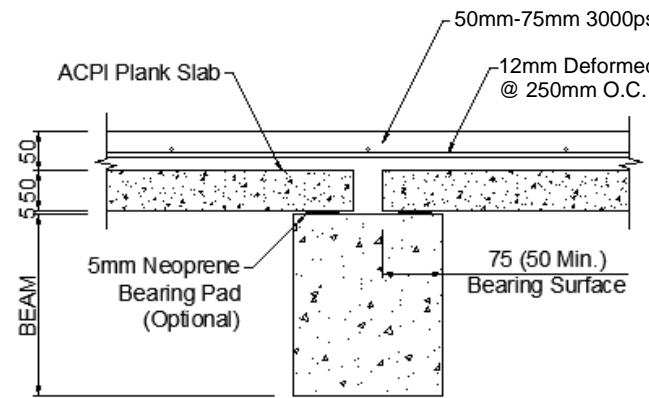
<u>Concrete Properties</u>		<u>Reinforcing Properties</u>	
Concrete Strength @ 28 Days	5000 psi	Type	Pre-stressing Wire
Concrete Density	2400 kg/m3	Size	4mm Diameter
<u>Dimensions</u>		Ultimate Tensile Strength	1760 MPa
Configuration	Length: 5 m (max) Width: 0.35 m Height: 5 cm	Area of Wire	12.56 mm2

Note: Actual product includes 2.5mm drafts for stripping

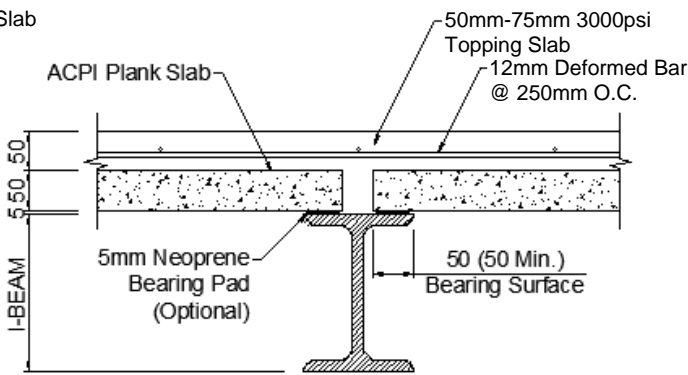
Cross-Section Details:



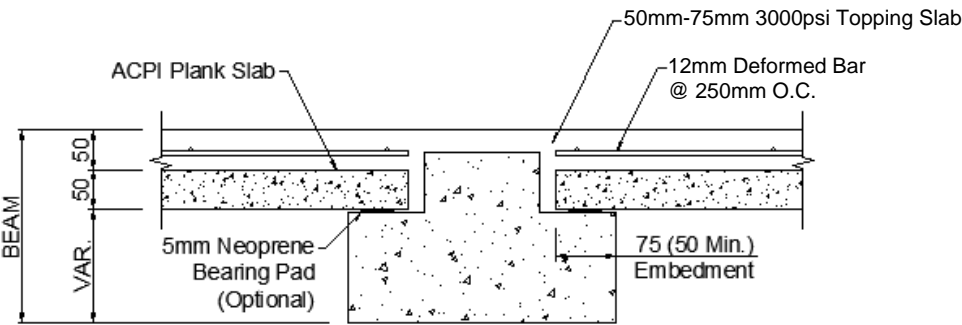
Connection Details:



Condition 1: Top of Concrete Beam
Connection Details



Condition 2: Top of I-Beam
Connection Details



Condition 3: Top of Concrete Corbel Beam
Connection Details

Photos:

